



DMC

capacitive touchscreens

YCS series



The information contained in this document has been carefully researched and is, to the best of our knowledge, accurate. However, we assume no liability for any product failures or damages, immediate or consequential, resulting from the use of the information provided herein. Our products are not intended for use in systems in which failures of product could result in personal injury. All trademarks mentioned herein are property of their respective owners. All specifications are subject to change without notice.



Clear Type Capacitive Touch Screen

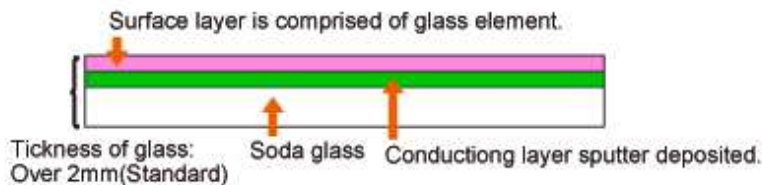
YCS Capacitive Touch Screen is a human-machine interactive interface comprised of a conductive-material-coated glass panel. Current is uniformed on the glass panel entirely. By touching a finger on the panel, current flows via the finger and the ratio of the current flow is computed in order to detect the touch location. Due to a simple and robust design, YCS Capacitive Touch Screen fully exerts its capability without losing its touch performance in any harsh environment.



Traits

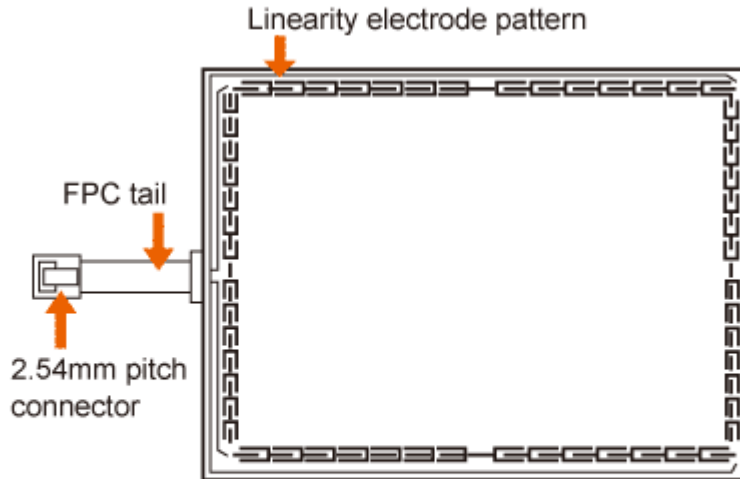
- Sensitive response and high resolution
- Able to show a display monitor without loss of clarity
- Easy installation onto a PC
- Not affected by dirt, grease, moist use
- Robust design allows to use outside
- Simple design fit for large-sized touch screens

Capacitive touch structure -1

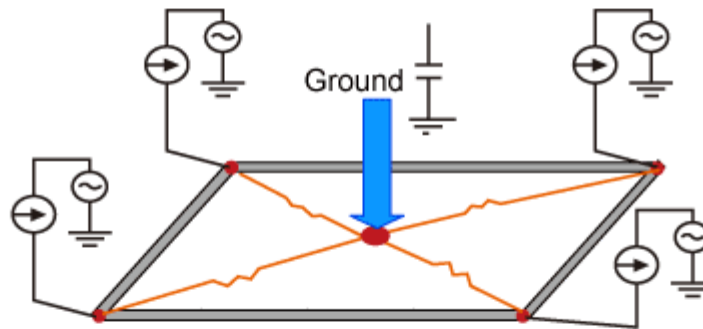




Capacitive touch structure -2



How Capacitive touch screens detect where you pressed



Touch location is detected by utilizing a variation of electrical field.

General Specifications

Operating Temp.	-20°C to 70°C*	Light Transmittance	89% (typical)
Operating Humidity	-20°C to 60°C Less than 90%RH* Exceeding 60°C to 133.8g/m ³ *	Surface Hardness	5H (Jis)
Storage Temp.	-40°C to 80°C*	Max. Voltage	DC6V
Storage Humidity	-40°C to 60°C Less than 95%RH* Exceeding 60°C to 142.9g/m ³ *	Max. Current	200mA
Activation Force	-	Terminal Resistance	-
Operating Life	50 million hit	Linearity	Less than +/- 2.0%

*No dew condensation.



Part No.	Diagonal Size	Tail Length & Position	External Dimension (E) Active Area Dimension (A)	Glass Thickness (Total)
YCS-057A110A	5.7"	FPC 110mm Left side	E: 133.9 x 103.4 mm A: 119.2 x 90.4 mm	1.8mm
YCS-070A110A	7.0" Wide	FPC 110mm Right side	E: 169.8 x 108.6 mm A: 154.3 x 94.7 mm	1.8mm
YCS-084A110A	8.4"	FPC 110mm Left side	E: 192.1 x 142.5 mm A: 178.4 x 130.5 mm	1.8mm
YCS-104A110A	10.4"	FPC 110mm Left side	E: 233.6 x 180.3 mm A: 217.9 x 167.9 mm	1.8mm
YCS-121A110A	12.1"	FPC 110mm Left side	E: 265.5 x 203.2 mm A: 250.0 x 191.0 mm	1.8mm
YCS-150A110A	15.0"	FPC 110mm Left side	E: 330.2 x 254.0 mm A: 317.0 x 241.8 mm	1.8mm
YCS-150B110A	15.0"	FPC 110mm Left side	E: 330.2 x 254.0 mm A: 317.0 x 241.8 mm	3.2mm
YCS-170A200A	17.0"	FPC 200mm Top side	E: 354.8 x 290.3 mm A: 342.7 x 276.5 mm	3.2mm
YCS-190A200A	19.0"	FPC 200mm Left side	E: 396.0 x 324.0 mm A: 382.2 x 311.8 mm	3.2mm

Table Contents

1. Product Specifications 3

 1-1. Product Applicable 3

 1-2. Structure 3

 1-3. Environmental Specifications 3

 1-4. Mechanical Characteristics 3

 1-5. Electrical Characteristics 3

 1-6. Appearance 4

2. Testing Regulation 5

 2-1. Testing Regulation 5

 2-2. Environmental Specifications 5

 2-3. Mechanical Characteristics 5

 2-4. Appearance 5

3. Reliability Condition 5

 3-1. Temperature Condition 5

4. Recommended Connector 6

 4-1. Recommended Connector 6

5. Handling Notes 6

 5-1. Precautions 6

 5-2. Handling Notes 6

 5-3. Construction Notes 6

 5-4. Electrical & Software Notice 6

 5-5. Mounting Notes 7

6. Warranty 7

 6-1. Warranty Period 7

 6-2. Warranty Target 8

 6-3. Warranty Exceptions 8

 6-4. Tools 8

 6-5. Changes 8

7. Revision history 9

1. Product Specifications

1-1. Product Applicable

§ This specification is applied to the analog capacitive touch screen: YCS Series.

1-2. Structure

§ Dimensions, structure, and shape are referred on the drawing.

1-3. Environmental Specifications

Specification	Value
Operating Temperature	-20°C to 70°C (no condensation)
Operating Humidity	-20°C to 60°C less than 90%RH (no condensation) Exceeding 60°C Less than 133.8g/m ³ (no condensation)
Storage Temperature	-40°C to 80°C (no condensation)
Storage Humidity	-40°C to 60°C less than 95%RH (no condensation) Exceeding 60°C Less than 142.9g/m ³ (no condensation)
Chemical Resistance (top surface)	Toluene, Trichloroethylene, Atherton, Alcohol, Gasoline, Machine Oil, Ammonia, Mayonnaise, Ketchup, Wine, Salad Oil, Vinegar, Lipstick, etc.

1-4. Mechanical Characteristics

Specification	Value
Operating Life	Input (finger) 50,000,000 hits
Light Transmittance	Over 90% (typical value at full wavelength)
Surface Hardness	5H (by JIS pencil hardness)

1-5. Electrical Characteristics

Specification	Value
Maximum Voltage	DC6V
Maximum Current	Bottom Electrode 200mA
Linearity	Under 2.0% (10% inside of View area after 25 points calibration.)

1-6. Appearance

§ Scratch, dust (W = Width, L = Length, D = Diameter = (Long diameter + Short diameter) / 2)

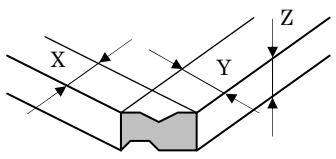
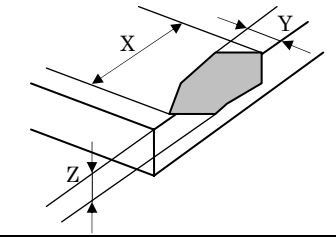
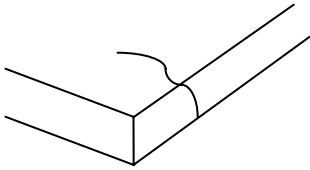
Item	Width (mm)	Length (mm)	Acceptable Numbers	Max Acceptable Numbers
Scratch Over 0.2mm judged by Diameter	$0.2 \geq W > 0.05$	$6 > L$	1pcs in $\phi 30\text{mm}$	Within 5pcs per product
	$0.05 \geq W > 0.025$	$10 > L$	Neglect	
	$0.025 \geq W$	$20 > L$	Neglect	
Dust Over 0.2mm judged by Diameter	$0.2 \geq W > 0.05$	$6 > L$	1pcs in $\phi 30\text{mm}$	
	$0.05 \geq W$	$10 > L$	Neglect	
Diameter (Scratch, Dust)	$1.0 \geq D > 0.5$		1pcs in $\phi 30\text{mm}$	
	$0.5 \geq D$		Neglect	
	D = Diameter = (Long diameter + Short diameter) / 2			

Applied only in the Viewing Area. Scratches or dusts in the outside of the Viewing Area are acceptable unless the electrical characteristics are affected.

§ Dirt

Acceptable if not noticeable on a black mat.

§ Chip, crack (t = glass thickness) (applicable only for the glass)

Item	Size (mm)		Acceptable Numbers	
Corner		X	≤ 3	2 pcs /panel
		Y	≤ 3	
		Z	$\leq t$	
Side		X	≤ 5	2 pcs /side
		Y	≤ 3	
		Z	$\leq t$	
Crack			0 pcs (unacceptable)	

2. Testing Regulation

2-1. Testing Regulation

§ If the regulation is not specified, the test is performed under the supplier's regulation.

§ Tests are performed under the room temperature unless specified. The room temperature is referred as follows:

Temperature: $20^{\circ}\text{C}\pm 5^{\circ}\text{C}$
Humidity: $65\%\pm 10\%\text{RH}$

2-2. Environmental Specifications

§ Chemical Resistance Test

Condition: Tested after leaving the chemical on the surface for 12 hours being wiped off by cloth.

Judgment: Must be no effect in appearance.

2-3. Mechanical Characteristics

§ Operating Life Test (Finger)

Condition: Testing rod: Refer to Figure 1
Voltage: DC5V
Load: 300g
Cycle: 2 hits/sec

Judgment Must satisfy the following:
Linearity: Must satisfy the specification.

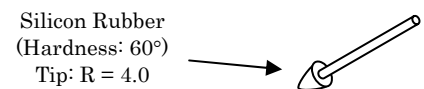


Figure 1: Testing rod

2-4. Appearance

§ Appearance Test

Condition: Tested by an examiner with over 1.0 eyesight at 30cm away from the product under the transmittable light at over 60° the surface of the product.

Judgment: Must satisfy the specification.

3. Reliability Condition

3-1. Temperature Condition

§ Temperature Condition Test

Following test are performed in the condition with no dew condensation:

Cold Test: Tested after leaving the parts in $-30^{\circ}\text{C}\pm 3^{\circ}\text{C}$ for 240 hours and in the room temperature for 2 hours.

Heat Test: Tested after leaving the parts in $80^{\circ}\text{C}\pm 3^{\circ}\text{C}$ for 240 hours and in the room temperature for 2 hours.

Humidity Test: Tested after leaving the parts in the temperature $60^{\circ}\text{C}\pm 2^{\circ}\text{C}$, humidity 90 to 95% for 240 hours and in the room temperature for 2 hours.

Cycle Test: Tested after 5 cycles of leaving the parts in the temperature $-30^{\circ}\text{C}\pm 3^{\circ}\text{C}$ for 1 hour and in the room temperature for 0.5 hours, then leaving the parts in the temperature $70^{\circ}\text{C}\pm 3^{\circ}\text{C}$ for 1 hour and in the room temperature for 0.5 hours.

Judgment: Must satisfy the following:
Linearity: Must satisfy the specification.
Appearance: Must satisfy the specification.

4. Recommended Connector

4-1. Recommended Connector

Part No.	Manufacturer	Pitch	Remarks
RE-H052SD-1110	J.S.T. Mfg Co., Ltd	2.54mm	equivalent
5-104935-6	AMP	2.54mm	

The connector of Touch screen and specification has possibility to change without notice.

The connector to mount, please use a general-purpose pin header for a control board.

5. Handling Notes

5-1. Precautions

§ This product is intended for use in standard applications (computers, office automation, and other office equipment, industrial, communications, and measurement equipment, personal and household devices, etc.) Please avoid using this product for special applications where failure or abnormal operation may directly affect human lives, or cause physical injury or property damage, or where extremely high levels of reliability are required (such as aerospace systems, vehicle operating control, atomic energy controls, medical devices for life support, etc.).

5-2. Handling Notes

§ Do not depress or scratch the product with any object with a sharp edge or end.

§ Do not forcibly bend or fold the product.

§ When the product is stored, make sure it is packed in a packing box and stored in a storage temperature range, eliminating any outside load.

§ Do not use or store the product under a condition where the product will be exposed to water, organic solution or acid.

§ Do not disassemble the product.

§ When you handle the product, hold the product by its body. Do not hold by the tail.

§ Clean the product with a soft cloth or a soft cloth with neutral detergent or alcohol. When contaminated by chemicals, wipe them off immediately with caution not to cause injury to human body.

§ The edge of the glass may cause injury.

5-3. Construction Notes

§ Do not use the touch screen when the condensation occurs. The condensation on the touch screen is a natural phenomenon and should disappear after the touch screen is warmed up.

§ The capacitive touch screen can not be used with overlay film and with glove.

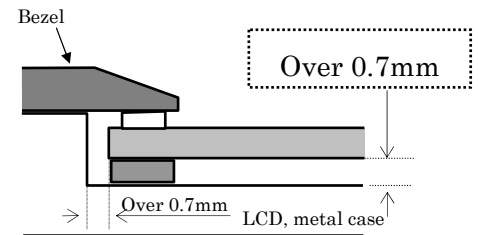
5-4. Electrical & Software Notice

The best performance can be obtained when used with the surface capacitive touch screen controller, "ETP" Series. If the touch screen controller or controller software is to be developed by the customer, please contact our sales engineer.

5-5. Mounting Notes

§ Gap between LCD and Touch screen

A gap of approximately 0.7mm is needed between LCD and Touch screen . It may cause unexpected input if the gap is too narrow.



§ Tail

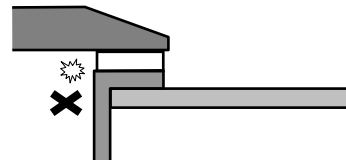
Fix a tail firmly with a gap of approximately 0.2mm between LCD and tail.

§ Tolerance

There is a tolerance of 0.2 to 0.3mm for the dimensions of the touch screen and the tail. A gap must be made to absorb the tolerance in the case and the connector.

§ Tail

The tail must not be forcibly stressed or bent too hard to avoid the conduction in the insulated area and wire breaking.



§ Mounting

Touch screen must be held from the bottom such as the structure gluing the touch screen onto the display. If the touch screen is glued to the bezel, the adhesion between the top and bottom electrode is stressed and may come off.

In case of using capacitive screen outside, the moisture may cause the trouble.

It is recommended that a nonmetallic material is used for the bezel in order to avoid circuit corrosion.

§ Grounding of peripheral metals

Metal portions on the periphery of the touch screen and the controller board must be properly grounded. Otherwise, position accuracy will be significantly unstable and reduced.

6. Warranty

6-1. Warranty Period

§ The warranty period is limited to one (1) years from the date of shipping. The warranty for the initial deflection such as appearance deflection is limited to one (1) month.

§ Any defected parts under proper use will be examined by the supplier and replaced by the new parts if the deflection is considered to be caused by the supplier.

§ The replacement is subject to be included in the next lot.

6-2. Warranty Target

- § The warranty only covers the product itself and does not cover any damage to others caused by using this product. Onsite repair or replacement is not supported.
- § We will do our best for delivery problem and product defections, but the warranty for the production line is not covered.
- § Capacitive touch screen are structurally not repairable. All defections are subject to replacement.

6-3. Warranty Exceptions

Following conditions are not covered with the warranty and subject to charge.

- § Any malfunctions and damages during transportation and transfer by the user.
- § Any malfunctions and damages caused by a natural disaster or a fire.
- § Any malfunctions and damages caused by static electricity
- § Any malfunctions and damages caused by the failure of the associated equipment.
- § If the product is remodeled, disassembled or repaired by the user.
- § If the product is glued onto the equipment and uninstalled.
- § Any malfunctions and damages caused by an improper usage and handling against the specifications and notes.

6-4. Tools

- § To maintain the quality, the printing screen and the die-cut plates are generally limited to use up to one (1) year. Reorders after one (1) year from the initial order or from the last renewal are subject to the tooling charge for replacing the printing screen and the die-cut plates. Reorders for the discontinued standard parts are also subject to tooling charge.
- § All the tools, such as CAD data (except for the drawing for approval), block copies (films), printing screens, and die-cut plates are not to be provided for administrative purpose.

6-5. Changes

- § Because of the manufacturing process, changing the dimensions, circuit pattern, and the tail position requires replacing most of the tools and is subject to high tooling charge. Please be careful when ordering and approving the drawing.
- § Circuit pattern and the materials that do not affect the environmental, electrical, and mechanical characteristics such as film, glass, ink and glue are subject to change for the supplier's reason or for improvement within the specifications.
- § Standard products are subject to change for improvement without notice.

7. Revision history

Rev. 1.00 (Jun, 23, 2009) Initial release

YCS Series Product Specifications
Rev. 1, July 1, 2009
© 2009 DMC Co., Ltd.

This document can be freely distributed, but any alternation to this document is prohibited.

DMC Co., Ltd.

<http://www.dmccoltd.com>
9th floor, Kanda Sento Building, 1-2-4 Yushima, Bunkyo-Ku, Tokyo 113-0034, Japan
Phone: +81-3-5209-7131 (Japanese), 7135 (English) Fax: +81-3-5209-7130



DATA DISPLAY GROUP

Our company network supports you worldwide with offices in Germany, Turkey, Great Britain and the USA. For more information please contact:



DISTEC GmbH

Distec GmbH

Augsburger Str. 2b
82110 Germering
Germany

Phone: +49 (0)89 / 89 43 63-0
Fax: +49 (0)89 / 89 43 63-131
E-Mail: info@distec.de
Internet: www.distec.de



DATA DISPLAY TEKNOLOJİ

Data Display Teknoloji Elektronik San Ve Dış Tic A.Ş.

Kustepe Leylak Sok.
Nursanlar Is Merkezi
Kat. 6 No: 21
Sisli / Istanbul
Turkey

Phone: +90 (0)212 / 356 04 20
Fax: +90 (0)212 / 356 04 25
E-Mail: info@datadisplay.com.tr
Internet: www.datadisplay.com.tr



DISPLAY TECHNOLOGY

Display Technology Ltd.

A2 Spectrum Business Centre
Anthonys Way, Medway City Estate
Rochester, Kent, ME2 4NP
United Kingdom

Phone: + 44 (0)1634 / 29 55 55
Fax: + 44 (0)1634 / 29 55 43
E-Mail: info@displaytechnology.co.uk
Internet: www.displaytechnology.co.uk



**Apollo
Display
Technologies**

A Data Display Company

Apollo Display Technologies, Corp.

85 Remington Blvd.
Ronkonkoma, NY 11779
United States of America

Phone: +1 631 / 580-43 60
Fax: +1 631 / 580-43 70
E-Mail: info@apollodisplays.com
Internet: www.apollodisplays.com
